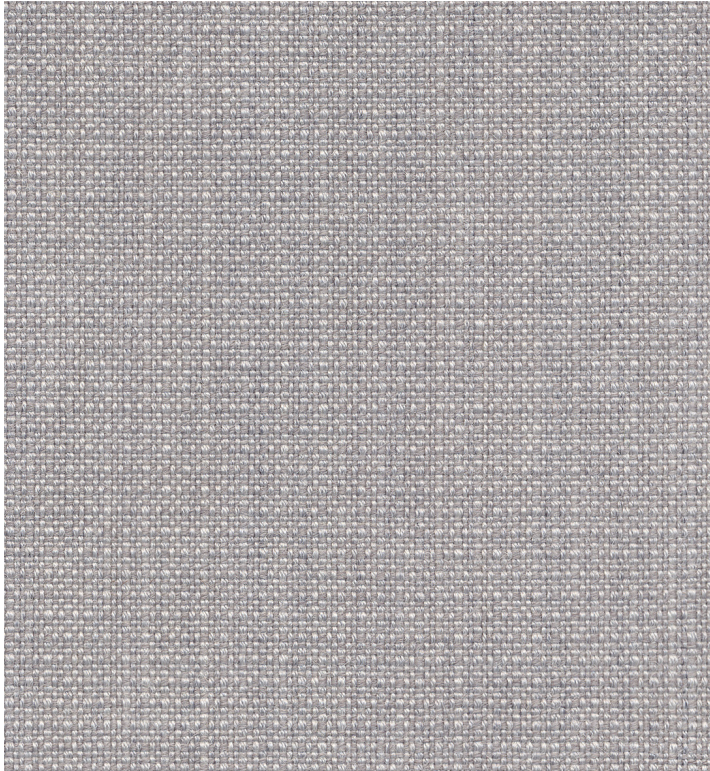
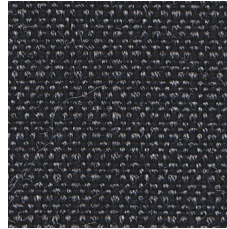


Tessuti / Fabrics / Gewebe / Tissus / Tejidos

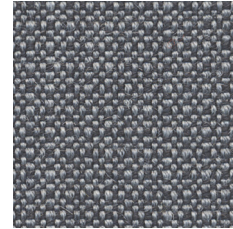
CS
Gabriel, Crisp



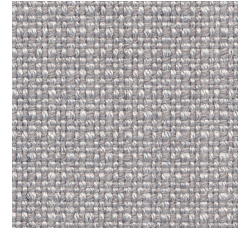
CS08_Crisp 04033



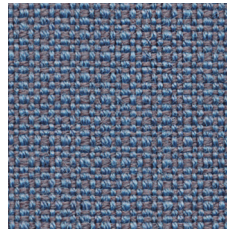
CS38_Crisp 04013



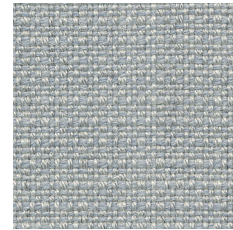
CS40_Crisp 04022



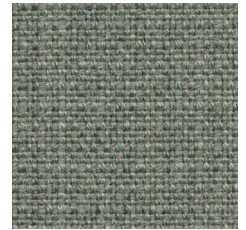
CS08_Crisp 04033



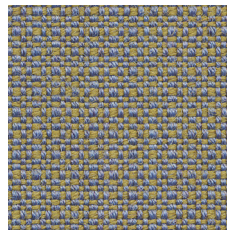
CS04_Crisp 04604



CS03_Crisp 04034



CS35_Crisp 04572



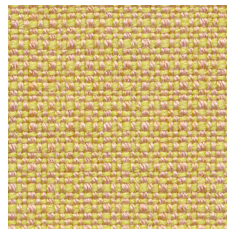
CS23_Crisp 04603



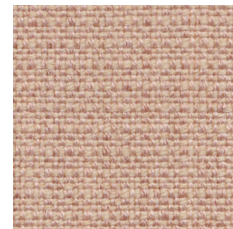
CS05_Crisp 04115



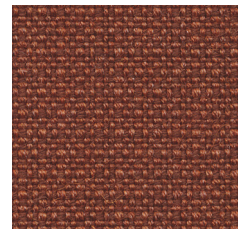
CS07_Crisp 04032



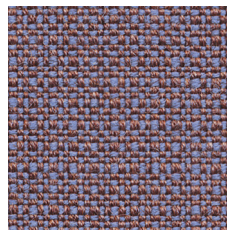
CS37_Crisp 04771



CS27_Crisp 04711







CS15_Crisp 04301



CS26_Crisp 04702

CS_Gabriel_Crisp

Designer	Mette Krebs Petersen
Composizione/Composition	93% New Zealand wool / 7% polyamide
Infiammabilità/Flammability	BS 5852 Part 1 0,1 Cigarette & match / BS 476 Part 7, class 2 / BS EN 1021 1&2 Cigarette and Match / Class Uno UNI 9175 Class 1 I EMME / CA TB 117-2013 / IMO MSC 307(88) Annex 1 part 8 / MED Certificate IMO / ÖNORM A3800-B2-B3825-Q1 UK
Legge degli Stati Uniti/US Act	AATCC 16 Light fastness / ASTM D4970 Pilling / ASTM D4966 Martindale (heavy duty) / CA TB 117-2013 / AATCC 8 or 116 Wet/dry crocking
Solidità del colore alla luce Colour fastness to light	5-7 (scale 1-8, max. 8 - EN ISO 105-B02)
Solidità del colore allo sfregamento Colour fastness to rubbing	4-5 (scale 1-5, max. 5 - EN ISO 105x12 dry/wet)
Abrasion/Abrasion	200.000 Martindale (EN ISO 12947-2)
Pilling	4-5 (scale 1-5, max. 5 - EN ISO 12945-2)
Ambiente/Environment	EU Ecolabel / Oeko-Tex / 100% free of heavy metals

Caratteristiche	Features
 Ignifugo	Flame retardant
Certificazioni	Certifications
 Non contiene metalli pesanti	No heavy metals
 EU Ecolabel è un marchio europeo che certifica il ridotto impatto ambientale del prodotto	EU Ecolabel is a European brand that certifies the reduced environmental impact of the product
 L'etichetta Oeko-Tex® STANDARD 100 garantisce che si può essere certi che ogni componente di questo articolo è stato testato per le sostanze nocive e che l'articolo è quindi innocuo in termini ecologici umani	The Oeko-Tex® STANDARD 100 label guarantees that every component of the article, has been tested for harmful substances and that the article therefore is harmless in human ecological terms

Note sui rivestimenti — Per ragioni tecniche non è possibile garantire lo stesso tono di colore tra un lotto di produzione ed un altro. Leggere differenze, con una tolleranza del 5% devono intendersi come normali e non possono dar adito a reclami o alla risoluzione del contratto. Sitland spa si riserva il diritto di apportare modifiche alle finiture contenute nella presente cartella senza preavviso alcuno. Ulteriori informazioni sulle caratteristiche tecniche di ogni singolo rivestimento sono disponibili nel sito www.sitland.com

Pulizia e manutenzione – Per la manutenzione dei tessuti consigliamo di passare con frequenza almeno mensile la superficie, utilizzando un aspirapolvere. In caso di unto, utilizzare solamente un panno leggermente umido e sapone neutro, non strofinare e lasciare asciugare naturalmente.

Note on upholstery – For technical reasons, batch to batch variations in shade may occur. Slight differences, within a tolerance of 5%, are to be considered as normal and acceptable and they cannot give rise to claims or to a breach of contract. Sitland spa reserves the right to make modifications to the finishes contained in the present folder without any prior communication. Further information on the technical characteristics of each individual upholstery is available on the website www.sitland.com

Cleaning and maintenance – For the fabrics maintenance, we suggest you to regularly vacuum clean. Stains can be cleaned with a soft damp cloth and mild soap; do not rub and allow to dry naturally.

I colori visualizzati sono puramente indicativi e possono variare rispetto alla realtà. Per maggiori informazioni si prega di contattare il nostro Servizio Clienti presso service@sitland.com

Photos and colours shown are used for reference only and may look different in reality. For any further information, please contact our Customer Service at service@sitland.com

Sitland spa

Via Cà Silvestre 52
36024 Nanto, Vicenza - I
t +39 0444 637100
f +39 0444 638407
info@sitland.com
www.sitland.com

Follow us on



A brand of Mezzalira Investment Group

www.mig.it