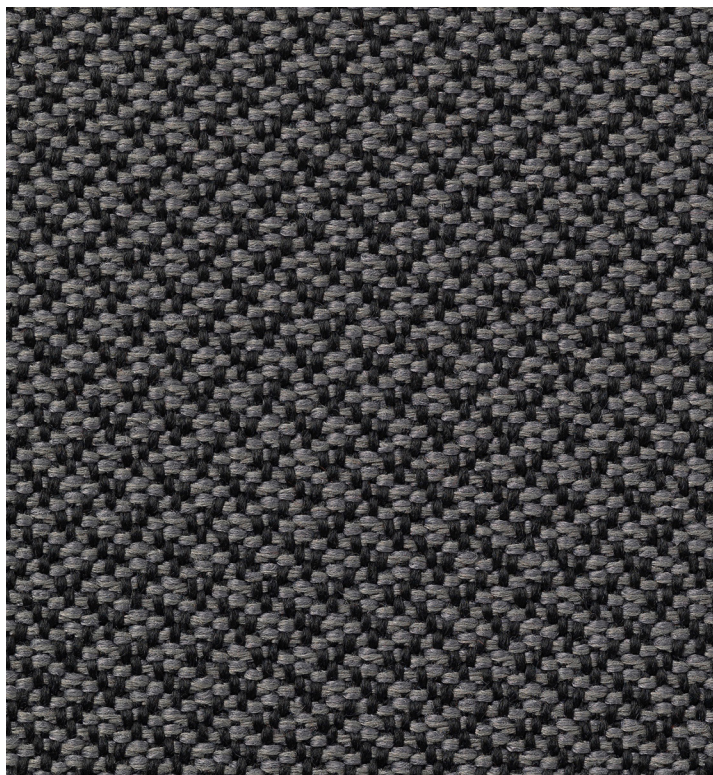
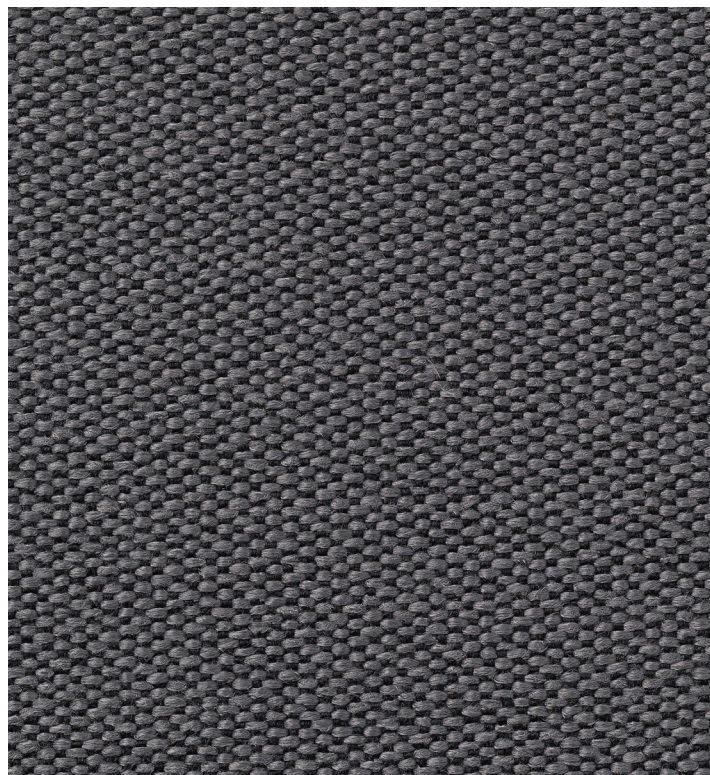


# Tessuti / Fabrics / Gewebe / Tissus / Tejidos

DF/DS  
Vescom, Deans



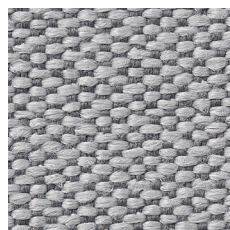
DF01\_Deans 7048.12



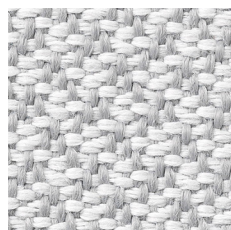
DS01\_Deans 7048.12



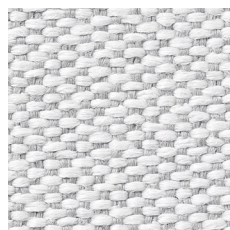
DF02\_Deans 7048.03



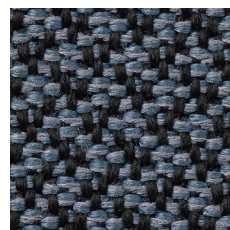
DS02\_Deans 7048.03



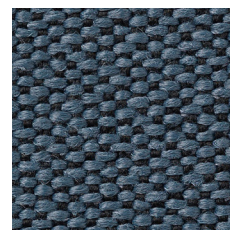
DF03\_Deans 7048.09



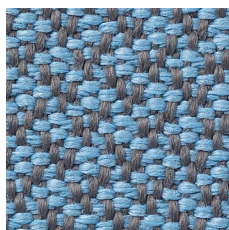
DS03\_Deans 7048.09



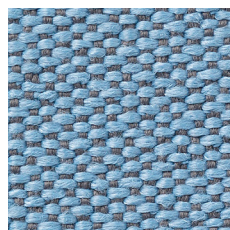
DF04\_Deans 7048.08



DS04\_Deans 7048.08



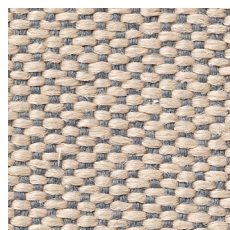
DF05\_Deans 7048.10



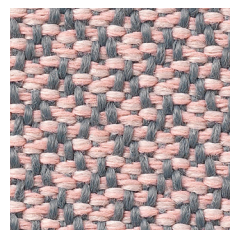
DS05\_Deans 7048.10



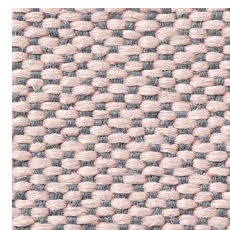
DF11\_Deans 7048.01



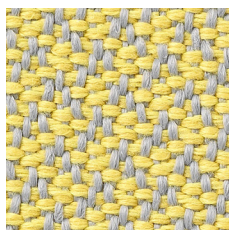
DS11\_Deans 7048.01



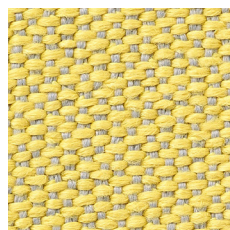
DF09\_Deans 7048.14



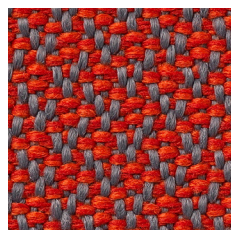
DS09\_Deans 7048.14



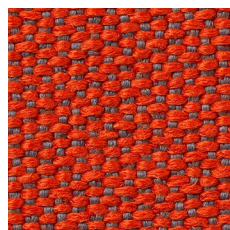
DF10\_Deans 7048.04



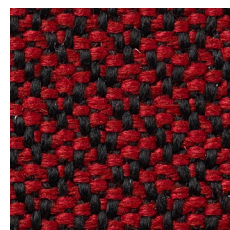
DS10\_Deans 7048.04



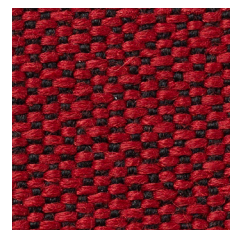
DF07\_Deans 7048.13



DS07\_Deans 7048.13



DF06\_Deans 7048.15




DS06\_Deans 7048.15

# sitland



## DF/DS\_Vescom\_Deans

<b>Composizione/Composition</b>	100% Polyester FR
<b>Infiammabilità/Flammability</b>	EN 1021/1-2 / BS 5852, crib 5 / NF P 92/503 – 507, M1 / DIN 4102, B1 / IMO 2010 FTP part 8 / UNI 9175, classe 1 IM / Cal TB 117 / NFPA 260, class 1
<b>Solidità del colore alla luce Colour fastness to light</b>	6-7 (scale 1-8, max. 8 - EN ISO 105-B02)
<b>Solidità del colore allo sfregamento Colour fastness to rubbing</b>	4-5 (scale 1-5, max. 5 - EN ISO 105x12 dry/wet)
<b>Abrasione/Abrasion</b>	110.000 Martindale (EN ISO 12947-2)
<b>Pilling</b>	4-5 (scale 1-5 ISO 12945-2)
<b>Ambiente/Environment</b>	EU Ecolabel / Oeko-Tex / 100% free of heavy metals

Caratteristiche	Features
 Ignifugo	Flame retardant

Certificazioni	Certifications
 L'etichetta Oeko-Tex® STANDARD 100 garantisce che si può essere certi che ogni componente di questo articolo è stato testato per le sostanze nocive e che l'articolo è quindi innocuo in termini ecologici umani	The Oeko-Tex® STANDARD 100 label guarantees that every component of the article, has been tested for harmful substances and that the article therefore is harmless in human ecological terms

**Note sui rivestimenti** — Per ragioni tecniche non è possibile garantire lo stesso tono di colore tra un lotto di produzione ed un altro. Leggere differenze, con una tolleranza del ff15% devono intendersi come normali e non possono dar adito a reclami o alla risoluzione del contratto. Sitland spa si riserva il diritto di apportare modifiche alle finiture contenute nella presente cartella senza preavviso alcuno. Ulteriori informazioni sulle caratteristiche tecniche di ogni singolo rivestimento sono disponibili nel sito [www.sitland.com](http://www.sitland.com)

**Pulizia e manutenzione** – Per la manutenzione dei tessuti consigliamo di passare con frequenza almeno mensile la superficie, utilizzando un aspirapolvere. In caso di unto, utilizzare solamente un panno leggermente umido e sapone neutro, non strofinare e lasciare asciugare naturalmente.

**Note on upholstery** – For technical reasons, batch to batch variations in shade may occur. Slight differences, within a tolerance of ff15%, are to be considered as normal and acceptable and they cannot give rise to claims or to a breach of contract. Sitland spa reserves the right to make modifications to the finishes contained in the present folder without any prior communication. Further information on the technical characteristics of each individual upholstery is available on the website [www.sitland.com](http://www.sitland.com)

**Cleaning and maintenance** – For the fabrics maintenance, we suggest you to regularly vacuum clean. Stains can be cleaned with a soft damp cloth and mild soap; do not rub and allow to dry naturally.

I colori visualizzati sono puramente indicativi e possono variare rispetto alla realtà. Per maggiori informazioni si prega di contattare il nostro Servizio Clienti presso [service@sitland.com](mailto:service@sitland.com)

Photos and colours shown are used for reference only and may look different in reality. For any further information, please contact our Customer Service at [service@sitland.com](mailto:service@sitland.com)

### Sitland spa

Via Cà Silvestre 52  
36024 Nanto, Vicenza - I  
t +39 0444 637100  
f +39 0444 638407  
[info@sitland.com](mailto:info@sitland.com)  
[www.sitland.com](http://www.sitland.com)

Follow us on



A brand of Mezzalira Investment Group

[www.mig.it](http://www.mig.it)