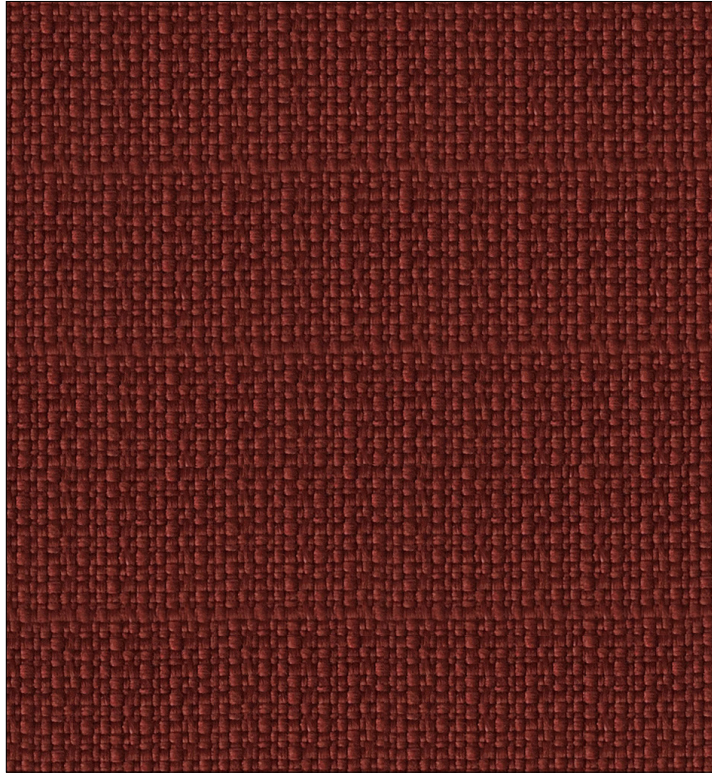
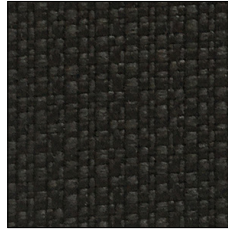


# Tessuti / Fabrics / Gewebe / Tissus / Tejidos

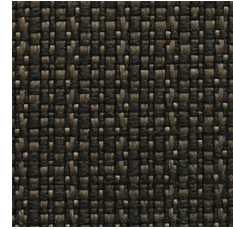
IS,  
Rada, Iris



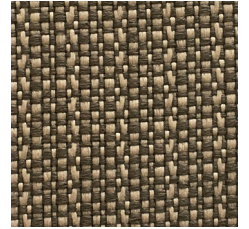
IS33\_Iris 303



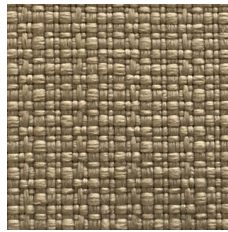
IS31\_Iris 200



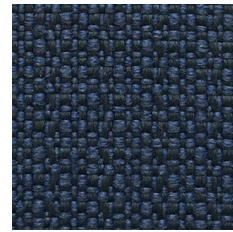
IS48\_Iris 605



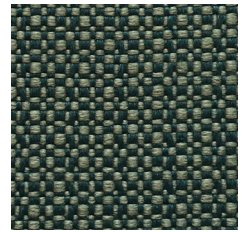
IS46\_Iris 603



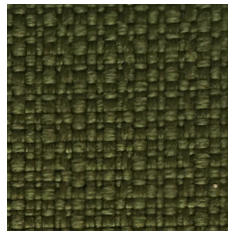
IS45\_Iris 601



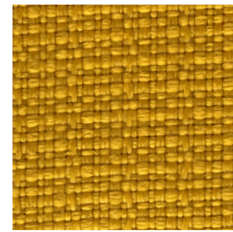
IS54\_Iris 707



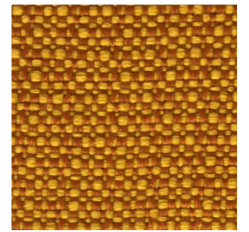
IS51\_Iris 703



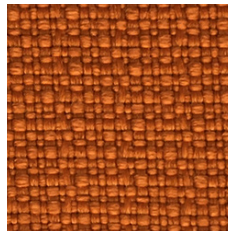
IS56\_Iris 801



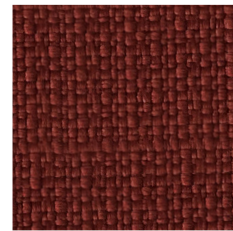
IS44\_Iris 501



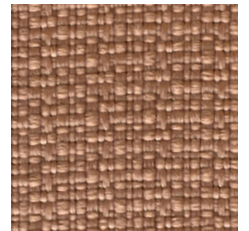
IS38\_Iris 308



IS37\_Iris 307






IS33\_Iris 303



IS30\_Iris 901

## IS\_Rada\_Iris

<b>Composizione/Composition</b>	100% recycled PET
<b>Infiammabilità/Flammability</b>	Classe 1M – Uni 9175 / EN 1021-1+2 / BS5852:2006 cig. + flame / California test TB - 117
<b>Solidità del colore alla luce Colour fastness to light</b>	7 (scale 1-8, max. 8 - EN ISO 105-B02)
<b>Solidità del colore allo sfregamento Colour fastness to rubbing</b>	4-5 (scale 1-5, max. 5 - EN ISO 105x12 dry/wet)
<b>Abrasiono/Abrasion</b>	100.000 Martindale (EN ISO 12947-2)
<b>Pilling</b>	4-5 (EN ISO 12947-2)

	<b>Caratteristiche</b>	<b>Features</b>
	Ignifugo	Flame retardant
	Riciclabile	Recyclable
	Riciclato	Recycled

**Note sui rivestimenti** – Per ragioni tecniche non è possibile garantire lo stesso tono di colore tra un lotto di produzione ed un altro. Leggere differenze, con una tolleranza del ffl5% devono intendersi come normali e non possono dar adito a reclami o alla risoluzione del contratto. Sitland spa si riserva il diritto di apportare modifiche alle finiture contenute nella presente cartella senza preavviso alcuno. Ulteriori informazioni sulle caratteristiche tecniche di ogni singolo rivestimento sono disponibili nel sito [www.sitland.com](http://www.sitland.com)

**Pulizia e manutenzione** – Per la manutenzione dei tessuti consigliamo di passare con frequenza almeno mensile la superficie, utilizzando un aspirapolvere. In caso di unto, utilizzare solamente un panno leggermente umido e sapone neutro, non strofinare e lasciare asciugare naturalmente.

**Note on upholstery** – For technical reasons, batch to batch variations in shade may occur. Slight differences, within a tolerance of ffl5%, are to be considered as normal and acceptable and they cannot give rise to claims or to a breach of contract. Sitland spa reserves the right to make modifications to the finishes contained in the present folder without any prior communication. Further information on the technical characteristics of each individual upholstery is available on the website [www.sitland.com](http://www.sitland.com)

**Cleaning and maintenance** – For the fabrics maintenance, we suggest you to regularly vacuum clean. Stains can be cleaned with a soft damp cloth and mild soap; do not rub and allow to dry naturally.

I colori visualizzati sono puramente indicativi e possono variare rispetto alla realtà. Per maggiori informazioni si prega di contattare il nostro Servizio Clienti presso [service@sitland.com](mailto:service@sitland.com)

Photos and colours shown are used for reference only and may look different in reality. For any further information, please contact our Customer Service at [service@sitland.com](mailto:service@sitland.com)

### Sitland spa

Via Cà Silvestre 52  
36024 Nanto, Vicenza - I  
t +39 0444 637100  
f +39 0444 638407  
[info@sitland.com](mailto:info@sitland.com)  
[www.sitland.com](http://www.sitland.com)

Follow us on



A brand of Mezzalira Investment Group

[www.mig.it](http://www.mig.it)