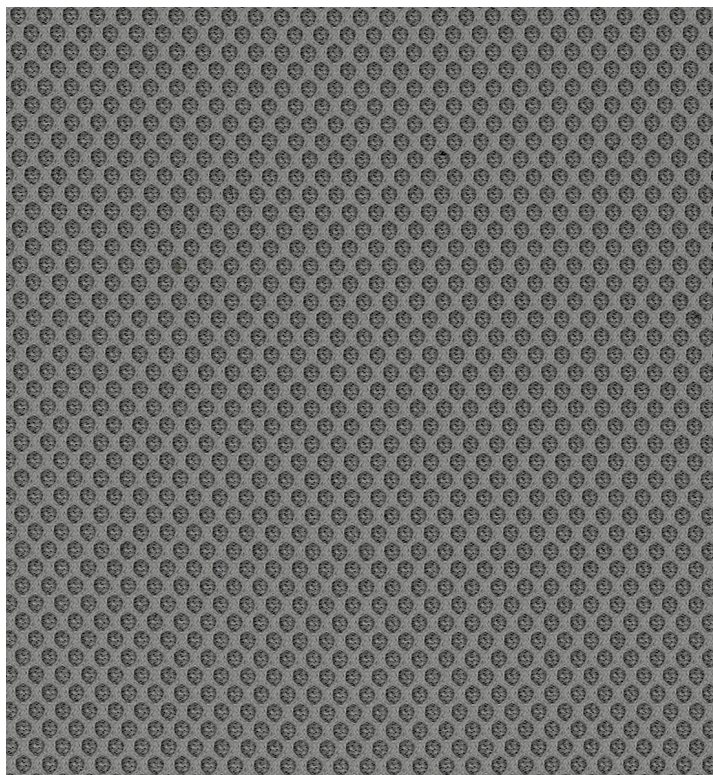
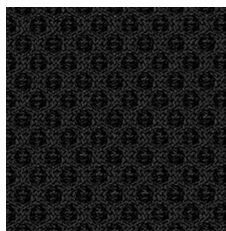


Reti / Meshes / Maschen / Mailles / Mallas

RR
Gabriel, Runner



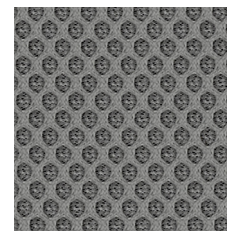
RR03_Runner 60011



RR01_Runner 60999



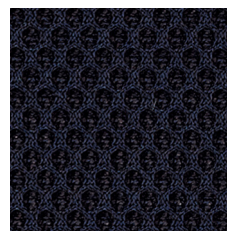
RR02_Runner 60025



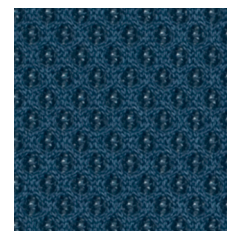
RR03_Runner 60011



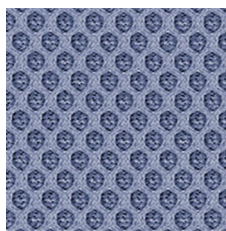
RR14_Runner 60165



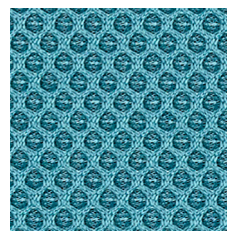
RR08_Runner 66064



RR12_Runner 66140



RR09_Runner 65078



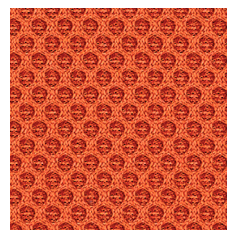
RR15_Runner 66063



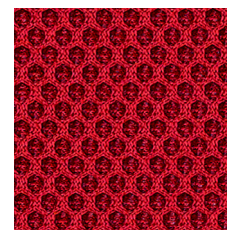
RR05_Runner 68056



RR13_Runner 61110






RR06_Runner 63034



RR07_Runner 64089

RR_Gabriel_Runner

Designer	Inger Mosholt Nielsen
Composizione/Composition	100% Polyester
Infiammabilità/Flammability	BS EN 1021-2 Match / CA TB 117-2013 / BS EN 1021-1 Cigarette / Class Uno UNI 9175 Class 2 I EMME
Legge degli Stati Uniti/US Act	ASTM D3511 Pilling / ASTM D4157-07 Wyz abrasion (heavy duty) / CA TB 117-2013 / AATCC 8 or 116 Wet/dry crocking / AATCC 16 Light fastness
Solidità del colore alla luce Colour fastness to light	5-7 (scale 1-8, max. 8 - EN ISO 105-B02)
Solidità del colore allo sfregamento Colour fastness to rubbing	4-5 (scale 1-5, max. 5 - EN ISO 105x12 wet/dry)
Abrasion/Abrasion	70.000 Martindale (EN ISO 12947-2)
Pilling	5 (scale 1-5, max. 5 - EN ISO 12945-2)
Test acustico di resistenza al flusso d'aria Acoustic test air flow resistance	EN 29053 & ISO 9053-1 (airflow resistance)
Test acustico di assorbimento acustico Acoustic test sound absorption	ISO 354 & ISO 11654 (sound absorption)
Ambiente/Environment	Oeko-Tex / Cradle to Cradle Certified™ Bronze

Caratteristiche	Features
 Ignifugo	Flame retardant
Certificazioni	Certifications
 Non contiene metalli pesanti	No heavy metals
 L'etichetta Oeko-Tex® STANDARD 100 garantisce che si può essere certi che ogni componente di questo articolo è stato testato per le sostanze nocive e che l'articolo è quindi innocuo in termini ecologici umani	The Oeko-Tex® STANDARD 100 label guarantees that every component of the article, has been tested for harmful substances and that the article therefore is harmless in human ecological terms

Note sui rivestimenti — Per ragioni tecniche non è possibile garantire lo stesso tono di colore tra un lotto di produzione ed un altro. Leggere differenze, con una tolleranza del ff15% devono intendersi come normali e non possono dar adito a reclami o alla risoluzione del contratto. Sitland spa si riserva il diritto di apportare modifiche alle finiture contenute nella presente cartella senza preavviso alcuno. Ulteriori informazioni sulle caratteristiche tecniche di ogni singolo rivestimento sono disponibili nel sito www.sitland.com

Pulizia e manutenzione – Per la manutenzione dei tessuti consigliamo di passare con frequenza almeno mensile la superficie, utilizzando un aspirapolvere. In caso di unto, utilizzare solamente un panno leggermente umido e sapone neutro, non strofinare e lasciare asciugare naturalmente.

Note on upholstery – For technical reasons, batch to batch variations in shade may occur. Slight differences, within a tolerance of ff15%, are to be considered as normal and acceptable and they cannot give rise to claims or to a breach of contract. Sitland spa reserves the right to make modifications to the finishes contained in the present folder without any prior communication. Further information on the technical characteristics of each individual upholstery is available on the website www.sitland.com

Cleaning and maintenance – For the fabrics maintenance, we suggest you to regularly vacuum clean. Stains can be cleaned with a soft damp cloth and mild soap; do not rub and allow to dry naturally.

I colori visualizzati sono puramente indicativi e possono variare rispetto alla realtà. Per maggiori informazioni si prega di contattare il nostro Servizio Clienti presso service@sitland.com

Photos and colours shown are used for reference only and may look different in reality. For any further information, please contact our Customer Service at service@sitland.com

Sitland spa

Via Cà Silvestre 52
36024 Nanto, Vicenza - I
t +39 0444 637100
f +39 0444 638407
info@sitland.com
www.sitland.com

Follow us on



A brand of Mezzalira Investment Group

www.mig.it